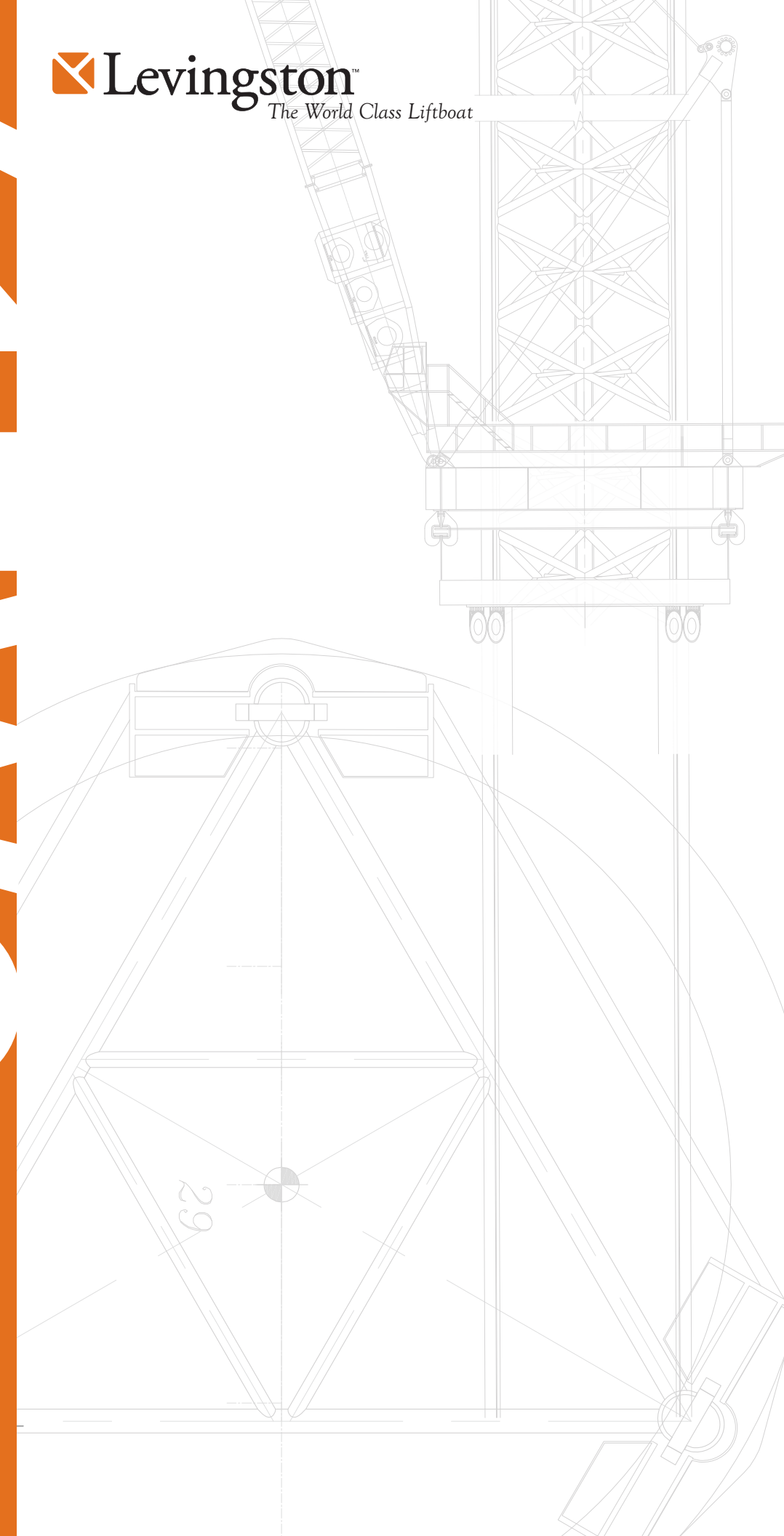


COMING 7

 **Levingston**
The World Class Liftboat



 **Levingston**

2 Spencer Road • Suite 105A • Boerne, TX 78006 • www.levingstonoffshore.com • 504-452-1628

© 2010 The Levingston Corporation

HULL CHARACTERISTICS

Length: 72 meters (236.2 feet)
 Beam: 62 meters (203.4 feet)
 Depth: 8.25 meters (27.1 feet)

LEGS

Number of Legs: 3
 Length: 126.5 meters (415 feet)
 Working Water Depth: 6 meters (20 feet) to 85 meters (250 feet)

DECK LOAD CAPACITY

Moving: 1,500 metric tonnes (1,654 short tons)
 Jacking: 1,500 metric tonnes (1,654 short tons)
 Operation: 1,500 metric tonnes (1,654 short tons)

JACKING SPEED

Setting on Location: Lowering Legs: 12 feet per minute
 Raising Hull: 4 feet per minute
 Departing Location: Lowering Hull: 4 feet per minute
 Raising Legs: 8 feet per minute

THRUSTERS

Design Speed: 6 knots approximately
 Three 1,900 hp L-Drive with one 600 hp bow thruster.
 The L-Drives are powered by variable speed AC motors with bow thrusters electrically powered.

CRANE SPECIFICATIONS

Starboard Crane:
 Type/Model: LEC600 (U.S.A. Patent #6,607,331)
 Manufacturer: RAM Crane
 Boom Length: 140 feet with optional 20 foot extensions
 Capacity: 272 metric tonnes (300 short tons)
 Whip / Fast line: 22.7 metric tonnes (25 short tons)
 Auxiliary Crane:
 Type/Model: RAM 100LE
 Manufacturer: RAM Crane
 Boom Length: 100 feet
 Capacity: 91 metric tonnes (100 short tons)

DIESEL ENGINE GENERATOR SETS

Number: 4
 Manufacturer: Caterpillar
 Type: 3516 or equivalents
 Output: Approximately (1,285 kW)
 Auxiliary generator: 400 kW

LIVING QUARTERS

Number of personnel accommodated: 100 including navigation crew
 Number of Dining Rooms: 1
 Seating in Each Dining Room: 64
 Recreational Facilities: Smoking and non-smoking recreational rooms, internet room, prayer room and gymnasium. One meeting room and two client offices.
 Hospital: 4 beds, easy access to heli-deck, resuscitators, rescue stretchers, dangerous drugs locker, and refrigerator

SAFETY EQUIPMENT

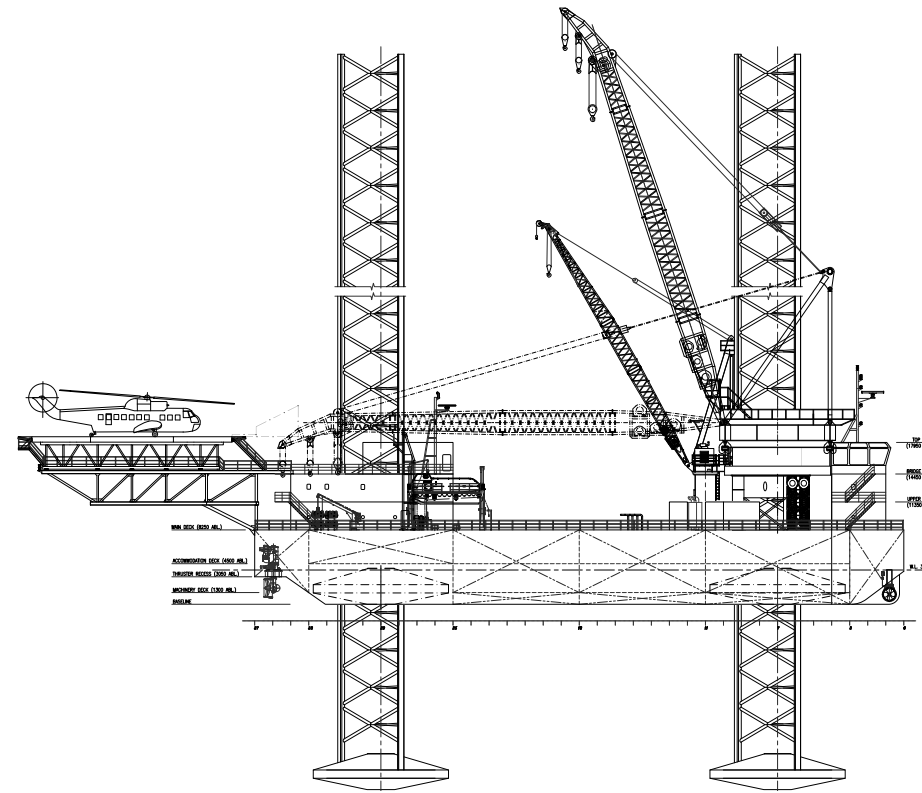
Inflatable Life Rafts: 2 x 100 man life boats

FIRE HYDRANT SYSTEM

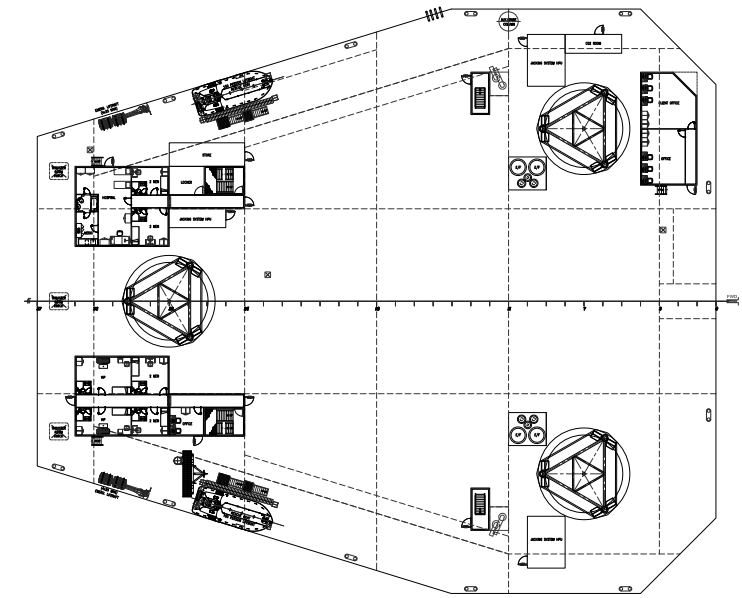
Number of Outlets: 3
 Hose Length: 100 ft. aft and 2 at 50 ft. each bow

HELI-DECK

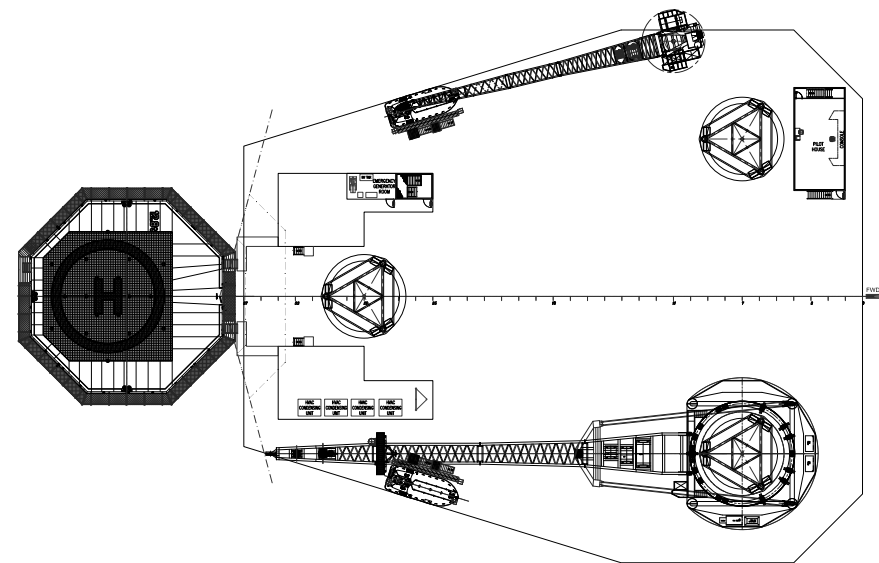
Maximum Size / Type: Sikorsky S-92 and S-61



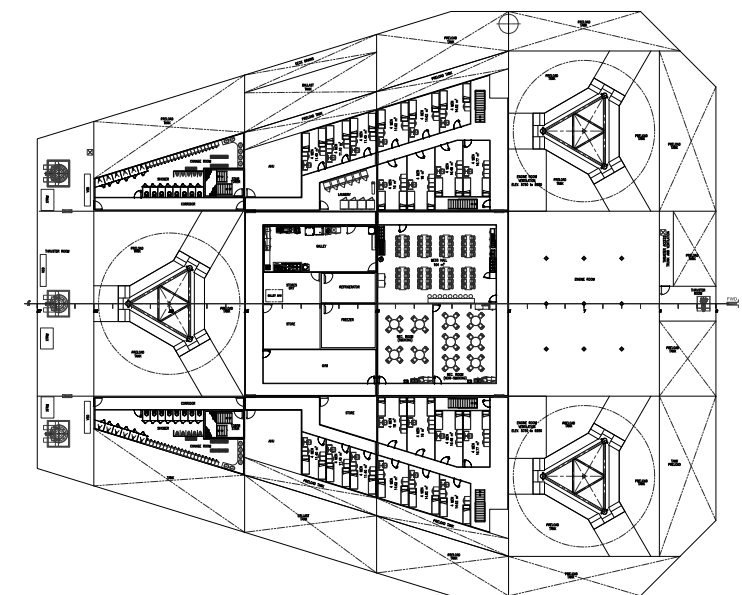
OUTBOARD PROFILE



MAIN DECK



OVERHEAD VIEW



ACCOMMODATION DECK

