

700+ FE

 **Levingston**TM
The World Class Liftboat

 **Levingston**

2 Spencer Road • Suite 105A • Boerne, TX 78006 • www.levingstonoffshore.com • 504-452-1628

© 2010 The Levingston Corporation

400LE

HULL CHARACTERISTICS

Length: 57 meters (187 feet)
Beam: 49.1 meters (161 feet)
Depth: 7.3 meters (24 feet)

LEGS

Number of Legs: 3
Length: 122 meters (400 feet) including spudcan
Working Water Depth: 6 meters (20 feet) to 76 meters (250 feet)

DECK LOAD CAPACITY

Moving: 1,500 metric tonnes (1,670 short tons)
Jacking: 1,500 metric tonnes (1,670 short tons)
Operation: 1,500 metric tonnes (1,670 short tons)

JACKING SPEED

Setting on Location: Lowering Legs: 12 feet per minute
Raising Hull: 4 feet per minute
Departing Location: Lowering Hull: 4 feet per minute
Raising Legs: 8 feet per minute

THRUSTERS

Design Speed: 6 knots approximately
Three 1,900 hp L-Drive with one 600 hp bow thruster. The L-Drives are powered by variable speed AC motors with bow thrusters electrically powered.

CRANE SPECIFICATIONS

Starboard Crane:
Type/Model: LEC600 [U.S.A. Patent #6,607,331]
Manufacturer: RAM Crane
Boom Length: 140 feet with optional 20 foot extensions
Capacity: 272 metric tonnes at 9.1 m (30 feet), 91 tonnes at 30.5 meters (100 feet).
Whip / Fast line: 5.5 tonnes
Auxiliary Crane: RAM 125 - 100 LE
Type/Model: L200
Manufacturer: Techcrane/Global
Boom Length: 100 feet
Capacity: 113 metric tonnes

DIESEL ENGINE GENERATOR SETS

Number: 4
Manufacturer: Caterpillar
Type: 3516 or equivalents
Output: Approximately (1,285 kW)
Usual total daily fuel consumption: 3,300 gals/day estimated
Auxiliary generator: 400 kW

LIVING QUARTERS

Number of personnel accommodated: 100 including navigation crew
Number of Dining Rooms: 1
Seating in Each Dining Room: 50
Recreational Facilities: Smoking and non-smoking recreational rooms, internet room and gymnasium. One meeting room and two client offices.
Hospital: 4 beds, easy access to heli-deck, resuscitators, rescue stretchers, dangerous drugs locker, and refrigerator

SAFETY EQUIPMENT

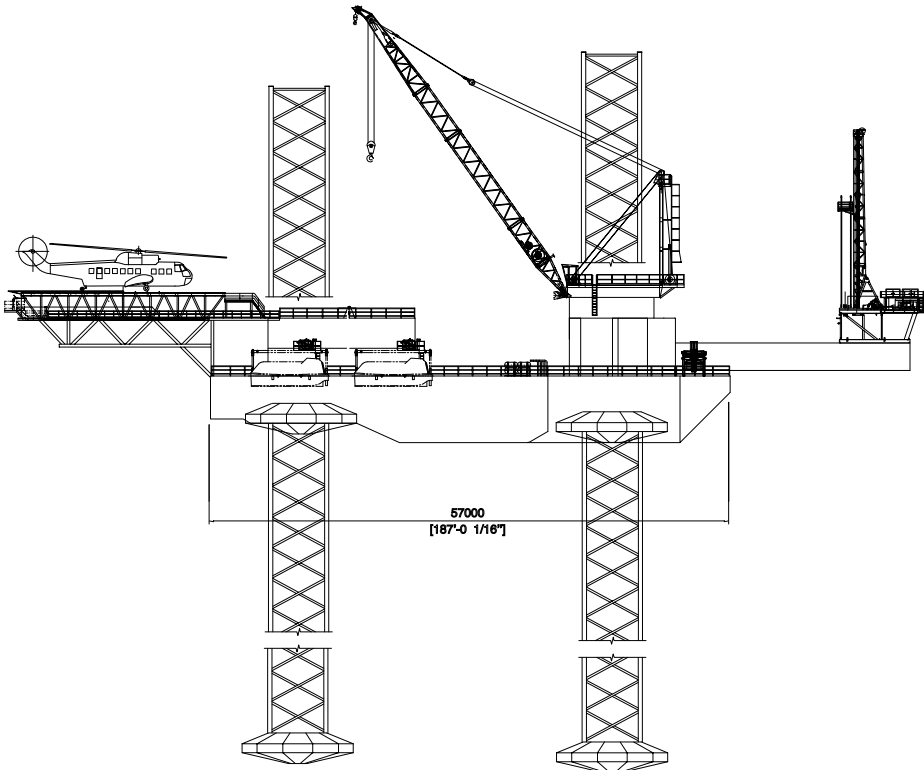
Inflatable Life Rafts: 3 x 70 man life boats

FIRE HYDRANT SYSTEM

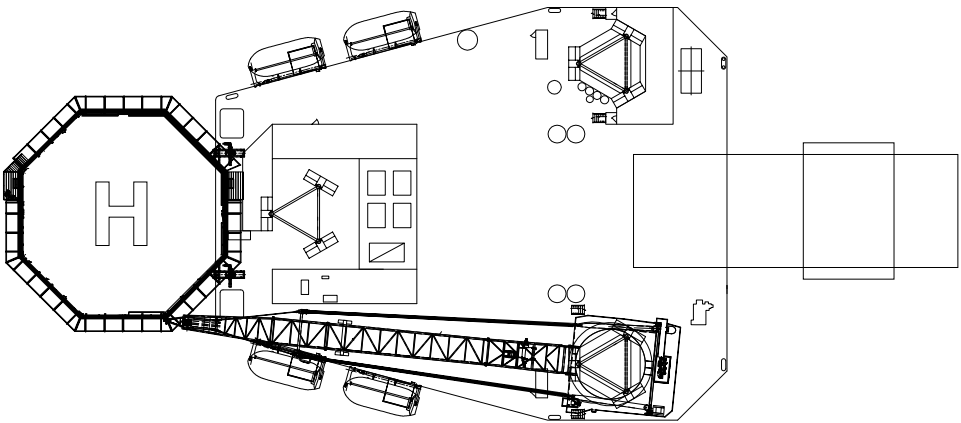
Number of Outlets: 3
Hose Length: 100 ft. aft and 2 at 50 ft. each bow

HELI-DECK

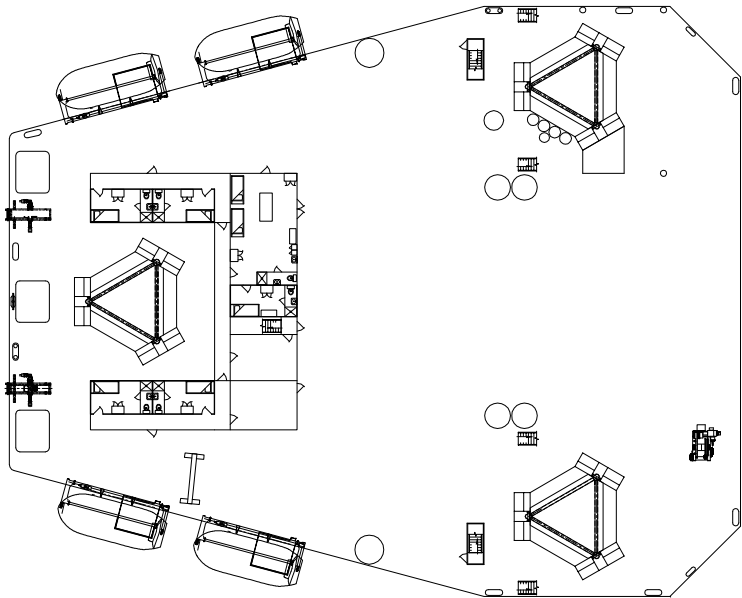
Maximum Size / Type: Sikorsky S-92 and S-61



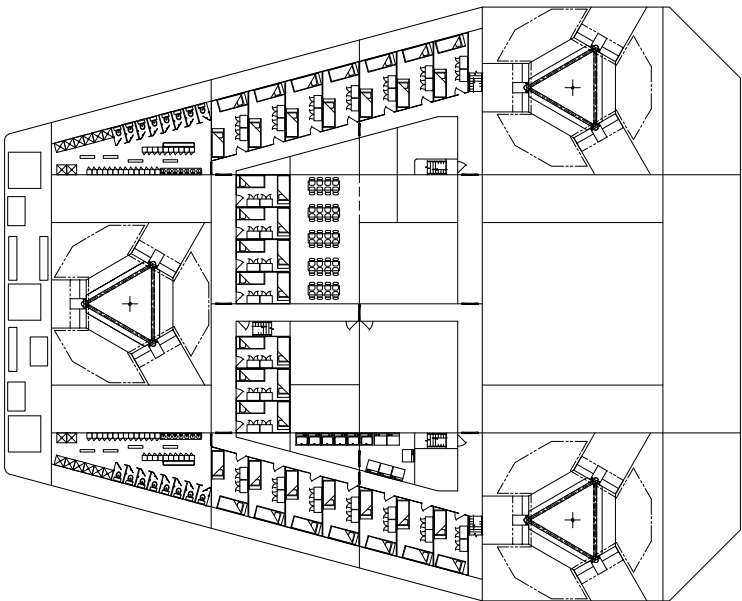
OUTBOARD PROFILE



OVERHEAD VIEW



MAIN DECK



Inset picture with optional workover rig attached.

ACCOMMODATION DECK

The Levingston 400LE is a self propelled, self elevating MOU (mobile offshore unit) vessel capable of working in water depths of 20 feet (6 meters) to 250 feet (76 meters) and has a deck load capacity of 1,500 metric tonnes (1,670 short tons). The Levingston 400LE has over 1,022 sq. meters (11,000 sq. ft.) available deck space making it ideally suited for such offshore jobs as repairs and construction, diving, pipe laying, remedial well workover, drilling, and other activities requiring a safe and stable platform. The vessel can also be fitted with a cantilever and small derrick with well offset of 60 feet aft of the bow at a hook load of 150 tonnes.

