

# 430M+ ALPHA



# 430W11V

## HULL CHARACTERISTICS

Length: 125 meters (410 feet)  
 Beam: 52 meters (171 feet)  
 Depth: 9 meters (29.5 feet)  
 Open Deck Area: 4,000 square meters (43,056 square feet)

## LEGS

Number of Legs: 4  
 Length: 131 meters (430 feet) including spudcan  
 Working Water Depth: Minimum 4.6 meters (15 feet) to  
 Maximum 85 meters (279 feet)

## DECK LOAD CAPACITY

Moving: 6,500 metric tonnes (7,165 short tons)  
 Jacking: 6,500 metric tonnes (7,165 short tons)  
 Operation: 6,500 metric tonnes (7,165 short tons)

## JACKING SPEED

Setting on Location: Lowering Legs: 12 feet per minute  
 (3.7 meters per minute)  
 Raising Hull: 4 feet per minute  
 (1.2 meters per minute)  
 Departing Location: Lowering Hull: 4 feet per minute  
 (1.2 meters per minute)  
 Raising Legs: 8 feet per minute  
 (2.4 meters per minute)

## THRUSTERS

Design Speed: 8 knots approximately  
 DP2: Hs = 2m, Wind = 20 knots  
 Four (4) 2700 KW aft Azimuthing thrusters (VFD based)  
 along with three (3) 1600 KW Bow Tunnel thrusters

## CRANE SPECIFICATIONS

Main Crane:  
 Type/Model: LEC1200 [U.S.A. Patent #6,607,331]  
 Manufacturer: RAM Crane  
 Boom Length: 85 meters (279 feet)  
 Capacity: 1,200 metric tonnes (1,322 short tons)  
 Auxiliary Crane:  
 Type/Model: LEC150  
 Manufacturer: RAM Crane  
 Boom Length: 140 feet  
 Capacity: 150 metric tonnes (165 short tons)

## DIESEL ENGINE GENERATOR SETS

Number: 4  
 Manufacturer and Model: Caterpillar CAT C-280-12  
 Auxiliary Generator: Caterpillar 600 kW

## LIVING QUARTERS

Number of personnel accommodated: 100 including navigation crew  
 Number of Dining Rooms: 1 with option for additional  
 Seating in Each Dining Room: 60  
 Recreational Facilities: Smoking and non-smoking recreational  
 rooms, internet room, prayer room, and gymnasium. One meeting  
 room and two client offices.  
 Hospital: 4 beds, easy access to heli-deck, resuscitators, rescue  
 stretchers, dangerous drugs locker, and refrigerator

## SAFETY EQUIPMENT

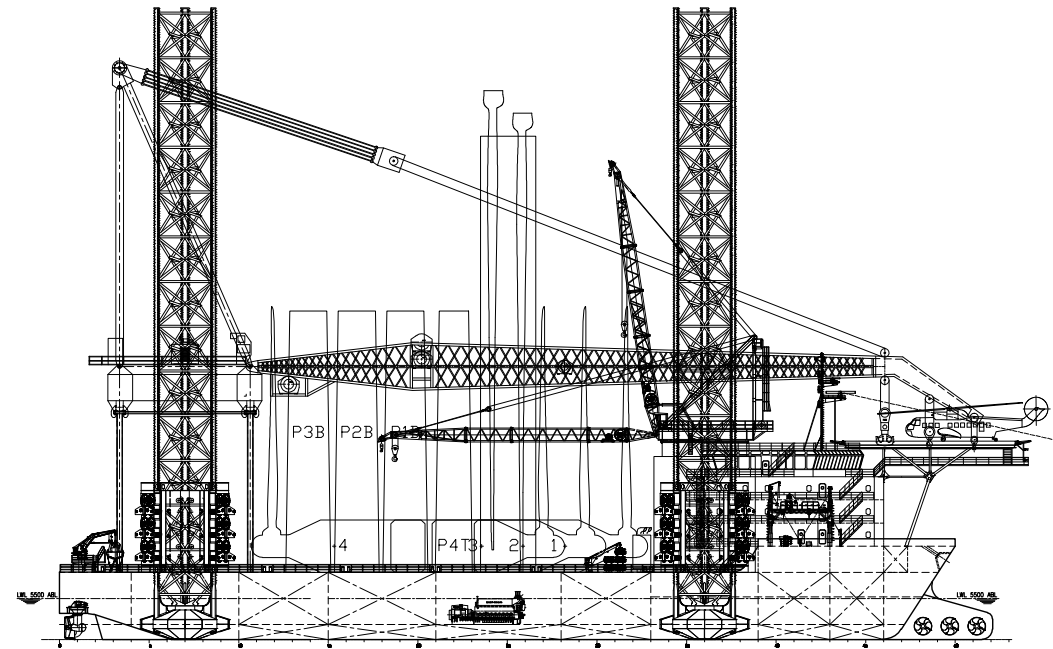
Inflatable Life Rafts: 3 x 70 man life boats

## FIRE HYDRANT SYSTEM

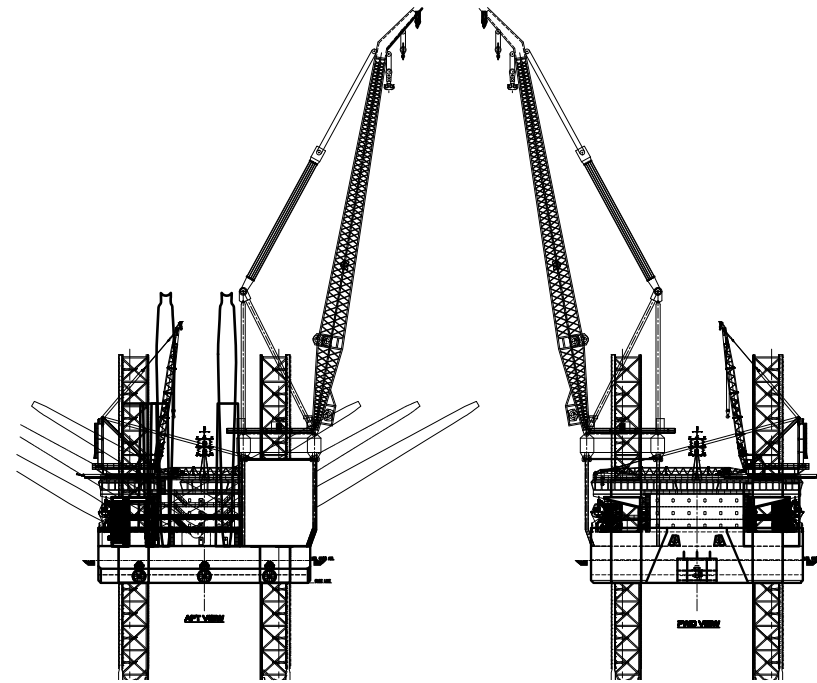
Number of Outlets: 3  
 Hose Length: 100 ft. aft and 2 at 50 ft. each bow

## HELI-DECK

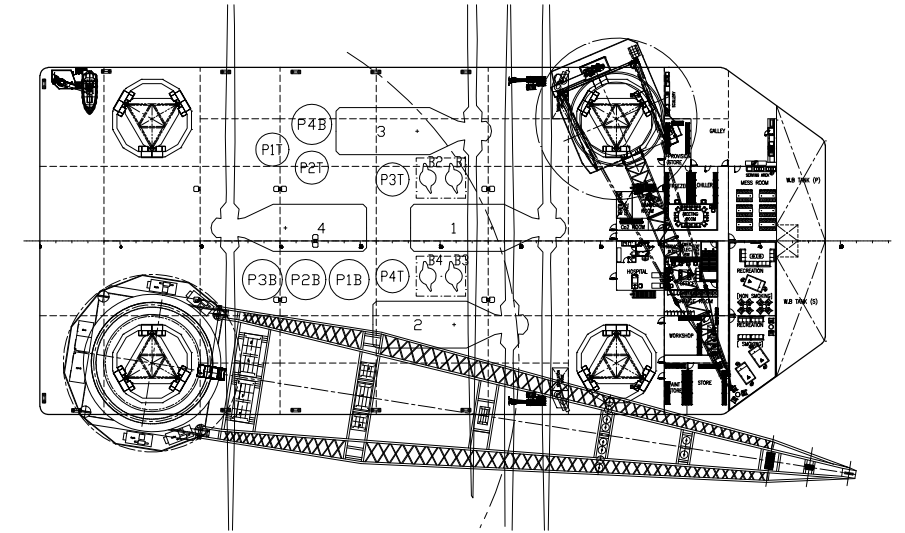
Maximum Size / Type: Sikorsky S-92 and S-61



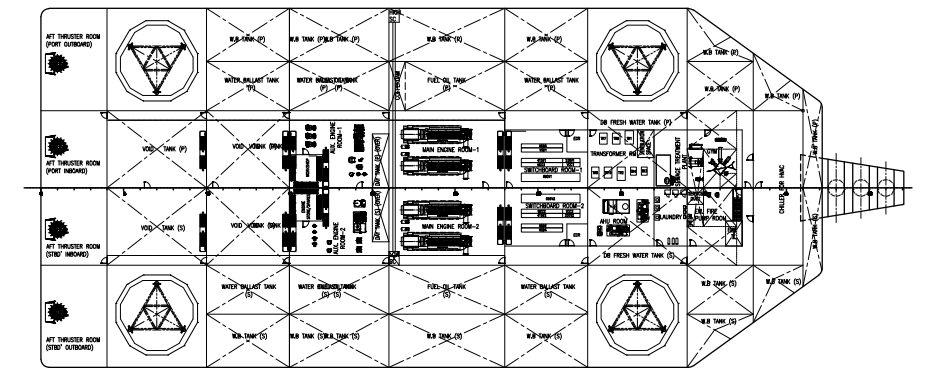
OUTBOARD PROFILE



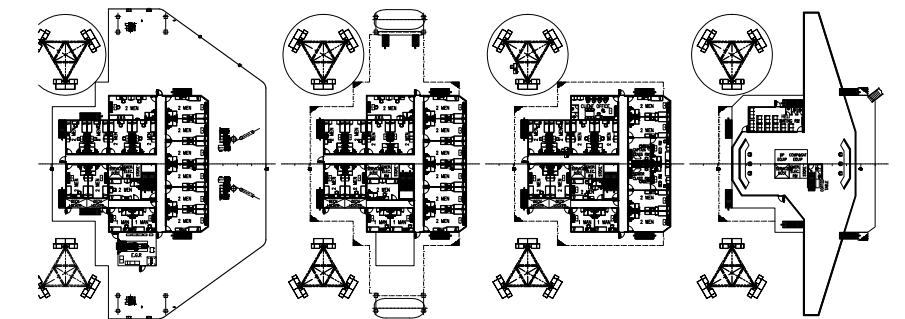
AFT & FWD VIEW



MAIN DECK



MACHINERY DECK



FORECASTLE DECK  
 1 MAN X 2 = 2 MEN  
 2 MEN X 14 = 28 MEN

1ST DECK  
 1 MAN X 2 = 2 MEN  
 2 MEN X 14 = 28 MEN

2ND DECK  
 1 MAN X 4 = 4 MEN  
 2 MEN X 14 = 28 MEN

BRIDGE DECK

