

320E

 **Levingston**
The World Class Liftboat



 **Levingston**

320E

HULL CHARACTERISTICS

Length: 57 meters (187 feet)
Beam: 44.2 meters (145 feet)
Depth: 6.9 meters (22.5 feet)

LEGS

Number of Legs: 3
Length: 97.5 meters (320 feet) including spudcans
Diameter: 3.1 meters (10 feet)
Working Water Depth: 4 meters (13 feet) to 65 meters (213 feet)

DECK LOAD CAPACITY

Moving: 680 metric tonnes (750 short tons)
Jacking: 680 metric tonnes (750 short tons)
Operation: 680 metric tonnes (750 short tons)

JACKING SPEED

Setting on Location: Lowering Legs: 8 feet per minute
Raising Hull: 4 feet per minute
Departing Location: Lowering Hull: 4 feet per minute
Raising Legs: 8 feet per minute

THRUSTERS

Design Speed: 6 knots approximately
Three 1,500 hp L-Drive with one 600 hp bow thruster. The L-Drives are powered by variable speed AC motors with bow thruster electrically powered.

CRANE SPECIFICATIONS

Number/Location: 2 / Starboard and Port
Type/Model: LEC500 (U.S.A. Patent #6,607,331)
Manufacturer: RAM Crane
Boom Length: 120 feet with optional 20 foot extensions
Capacity: 227 metric tonnes
Whip/fast line 5.4 metric tonnes (6 short tons)

MAIN AIR COMPRESSORS

Type/Number: Rotary/2
Output pressure and volume: 150 psi

DIESEL ENGINE GENERATOR SETS

Number: 4
Manufacturer: Caterpillar
Type: 3516 or equivalents
Output: Approximately (1,285 kW)
Usual total daily fuel consumption: 3,300 gals/day estimated
Auxiliary Generator: 400 kW

LIVING QUARTERS

Number of personnel accommodated: 160
Number of Dining Rooms: 1
Seating in Each Dining Room: 80
Recreational Facilities: Located over hospital, meeting room aft of stern jacking tower.
Hospital: 4 beds, easy access to heli-deck, resuscitators, rescue stretchers, dangerous drugs locker, and refrigerator

SAFETY EQUIPMENT

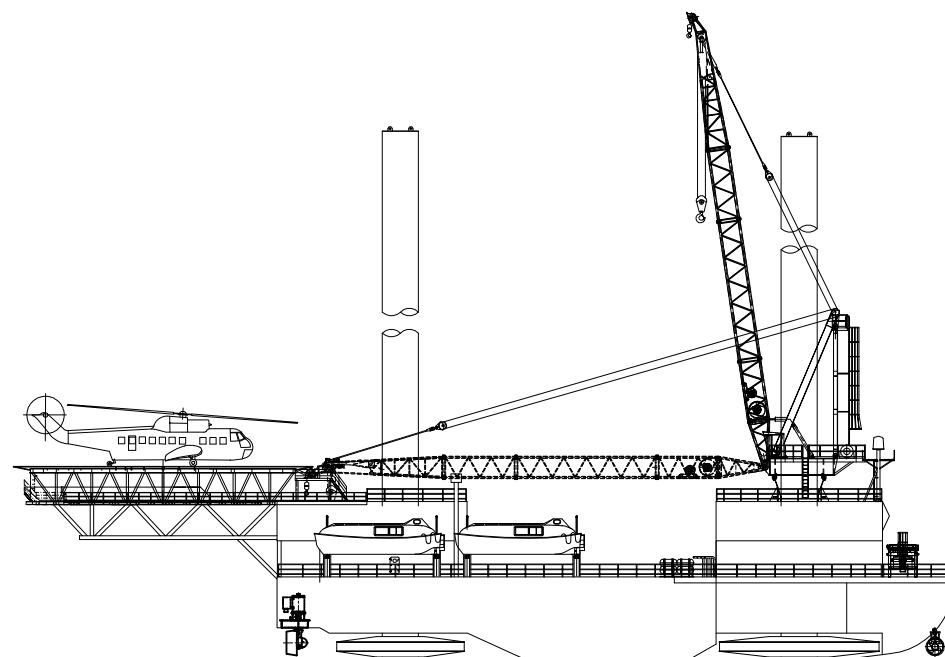
Inflatable Life Rafts: 4 x 80 man life rafts

FIRE HYDRANT SYSTEM

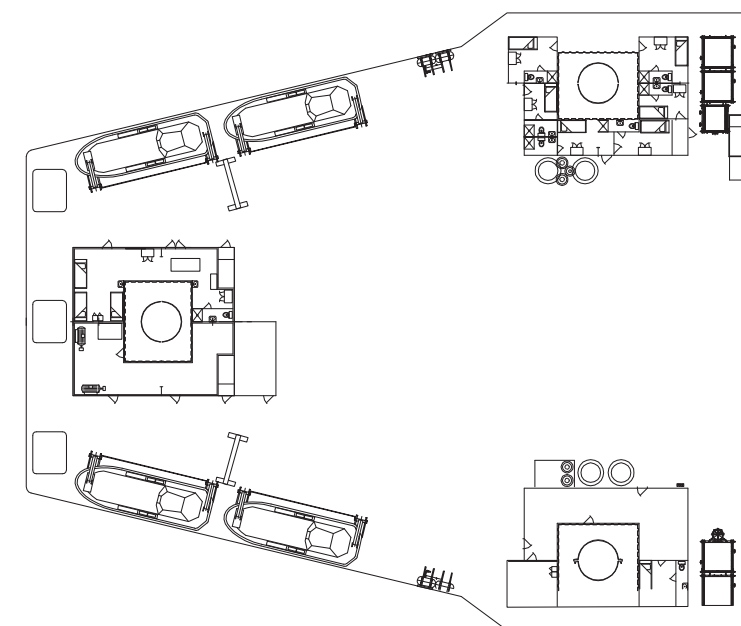
Number of Outlets: 3
Hose Length: 100 ft. aft and 2 at 50 ft. each bow

HELI-DECK

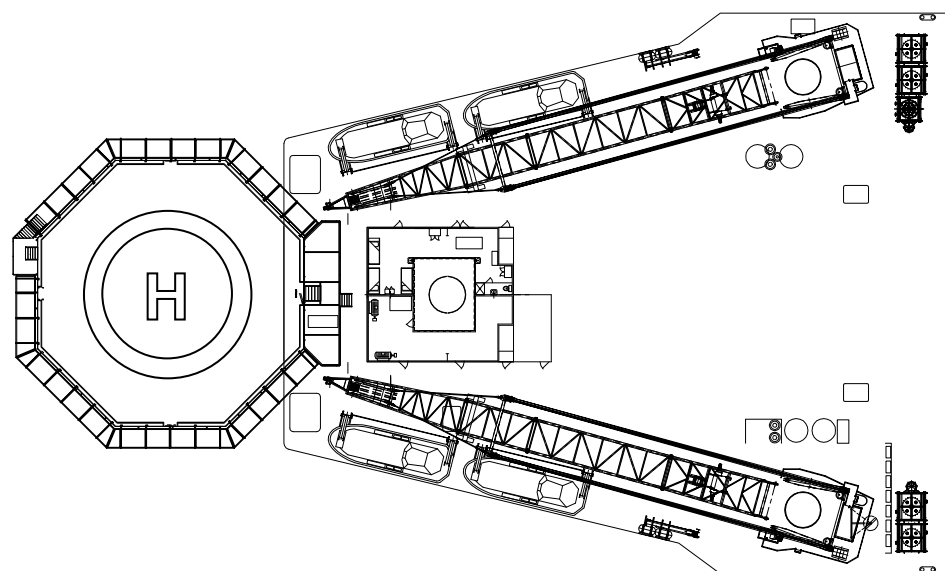
Maximum Size / Type: Sikorsky S-92 and S-61



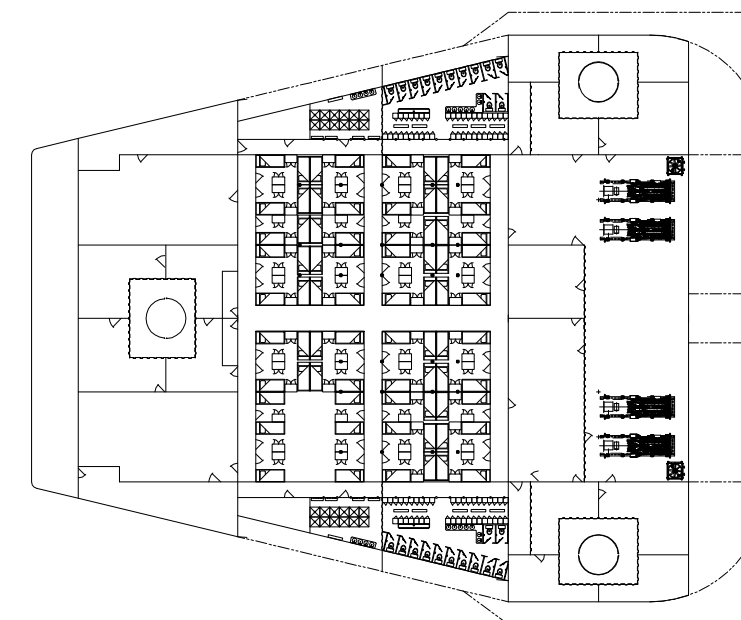
OUTBOARD PROFILE



MAIN DECK



OVERHEAD VIEW



ACCOMMODATION DECK

The Livingston 320E is a self propelled, self elevating MOU (mobile offshore unit) vessel capable of working in water depths of 13 feet (4 meters) to 213 feet (65 meters) and has a deck load capacity of 680 metric tonnes (750 short tons). The Livingston 320E has over 1,022 sq. meters (11,000 sq. ft.) available deck space making it ideally suited for such offshore jobs as repairs and construction, diving, pipe laying, well intervention procedures and other activities requiring a safe and stable platform.

