

# 2011

 **Levingston**<sup>™</sup>  
*The World Class Liftboat*

 **Levingston**

2 Spencer Road • Suite 105A • Boerne, TX 78006 • [www.levingstonoffshore.com](http://www.levingstonoffshore.com) • 504-452-1628

© 2010 The Levingston Corporation

HULL CHARACTERISTICS

Length: 40.8 meters (134 feet)  
Beam: 42.67 meters (140 feet)  
Depth: 6.25 meters (20.5 feet)

LEGS

Number of Legs: 3  
Length: 79.2 meters (260 feet)  
Diameter: 2.5 meters (8.25 feet)  
Working Water Depth: 5 to 35 meters of water with appropriate air gap

DECK LOAD CAPACITY

Moving: 544.3 metric tonnes (600 short tons)  
Jacking: 544.3 metric tonnes (600 short tons)  
Operation: 544.3 metric tonnes (600 short tons)

JACKING SPEED

Setting on Location: Lowering Legs: 8 feet per minute  
Raising Hull: 4 feet per minute  
Departing Location: Lowering Hull: 4 feet per minute  
Raising Legs: 8 feet per minute

THRUSTERS

Design Speed: 6 knots approximately  
Three 1,200 hp Rolls Royce Commercial Marine Z-Drives with one Rolls Royce 600 hp bow thruster.

CRANE SPECIFICATIONS

Crane #1  
Type/Model: LEC400 (U.S.A. Patent #6,607,331)  
Manufacturer: Techcrane Global  
Boom Length: 100 feet with optional 20 foot extensions  
Capacity: 227 metric tonnes at 6.1 meter radius, 122.8 metric tonnes at 10.7 meters and 36.2 metric tonnes at 30.5 meters (100 feet)  
Whip/fast line 2.9 metric tonnes  
Crane #2  
Type/Model: F80  
Manufacturer: Techcrane/EBI  
Boom Length: 100 feet

MAIN AIR COMPRESSORS

Type/Number: Rotary/2  
Output pressure and volume: 150 psi

DIESEL ENGINE GENERATOR SETS

Number: 4  
Manufacturer: Caterpillar  
Type: 3512B or equivalent  
Output: 1,430 hp (1,070 kW)  
Usual total daily fuel consumption: 3,300 gals/day estimated

LIVING QUARTERS

Number of personnel accommodated: 76  
Number of Dining Rooms: 1  
Seating in Each Dining Room: 32 operational, 16 staff  
Recreational Facilities: Located over hospital, meeting room aft of stern jacking tower.  
Hospital: 2 beds, easy access to heli-deck, resuscitators, rescue stretchers, dangerous drugs locker, and refrigerator

SAFETY EQUIPMENT

Inflatable Life Rafts: 6 x 25 man life rafts

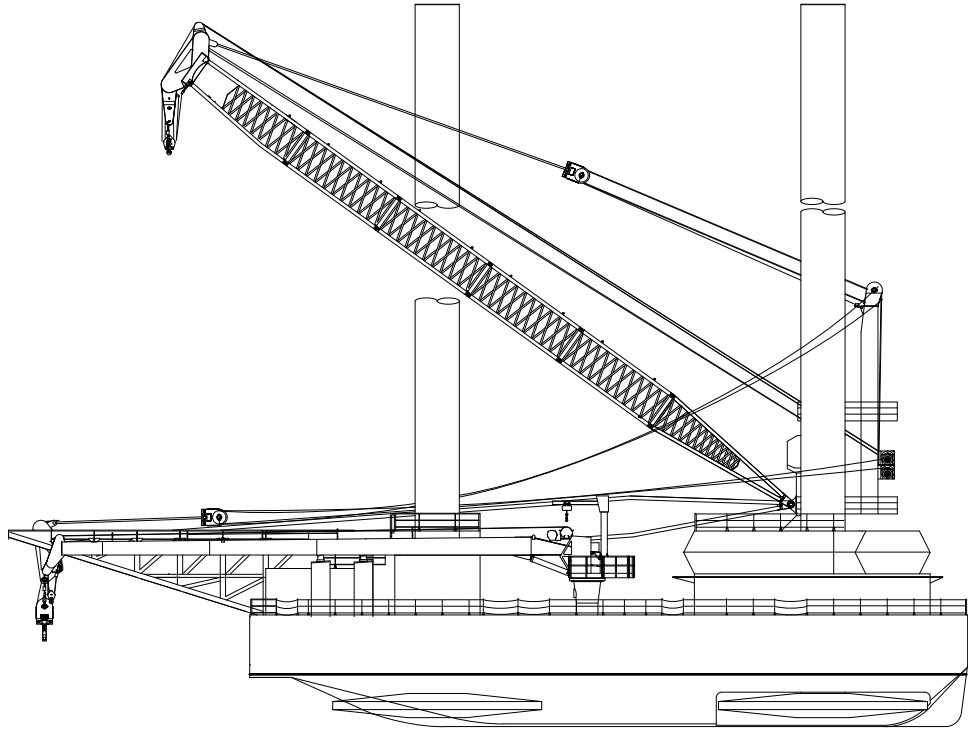
FIRE HYDRANT SYSTEM

Number of Outlets: 3  
Hose Length: 100 ft. aft and 2 at 50 ft. each bow

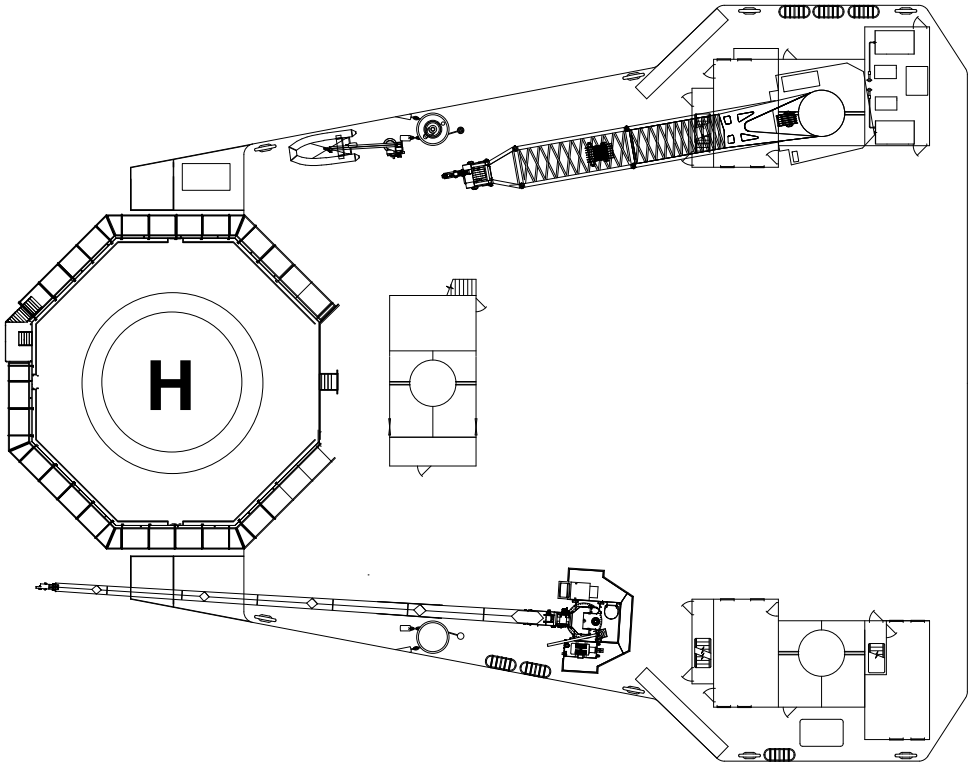
HELI-DECK

Maximum Size / Type: Sikorsky S-76

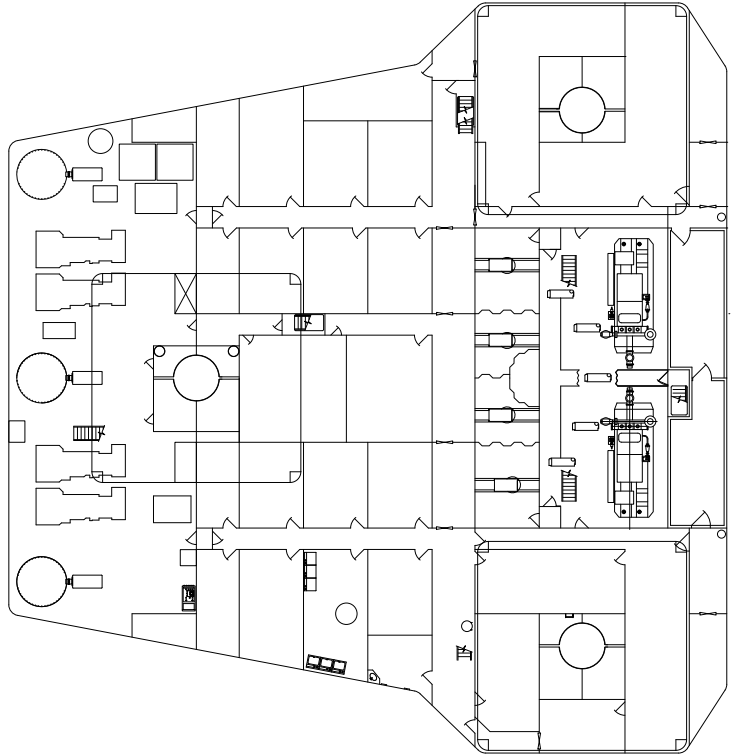
260 F



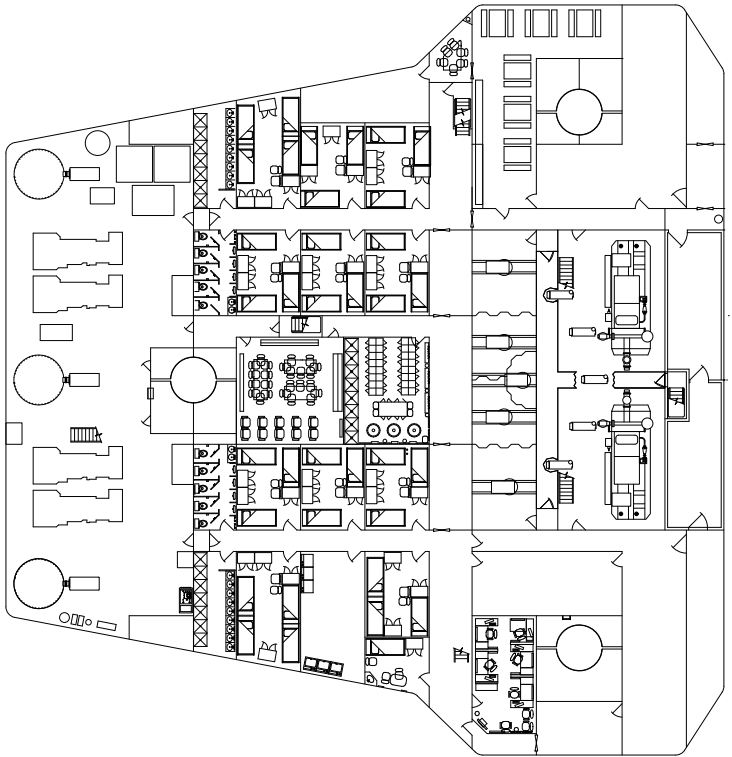
OUTBOARD PROFILE



OVERHEAD VIEW



MAIN DECK



ACCOMMODATION DECK

